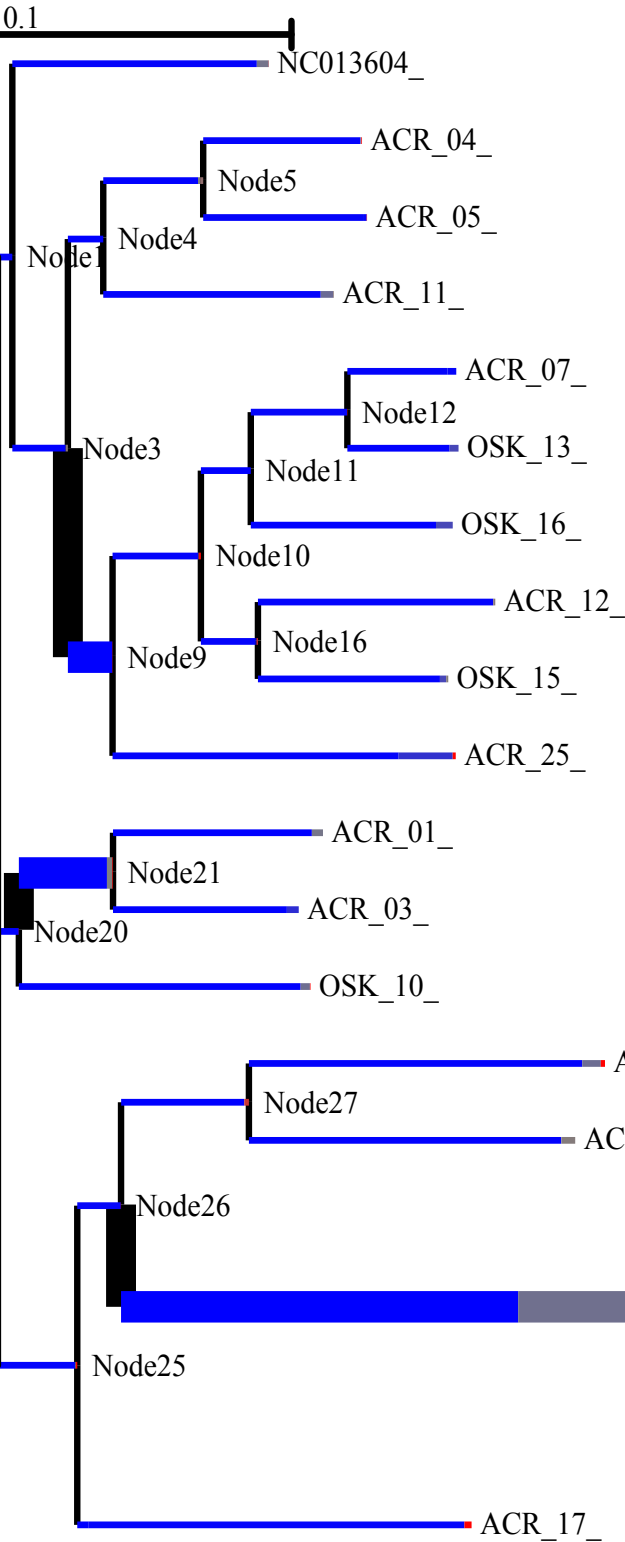


Branch-site REL analysis results

(Datamonkey web-server)



Data summary

20 sequences with 3745 sites.

Summary of episodic diversifying selection analysis

Found 4 branches under episodic diversifying selection at $p \leq 0.05$.

| Branch ? | Corrected p-value ? | ω^+ ? | Pr [$\omega=\omega^+$] ? |
|----------|---------------------|--------------|----------------------------|
| Node30 | < 0.0001 | 27.03 | 0.09 |
| Node9 | 0.002 | 29.82 | 0.01 |
| Node32 | 0.007 | 6.84 | 0.03 |
| Node21 | 0.022 | 46.10 | 0.01 |